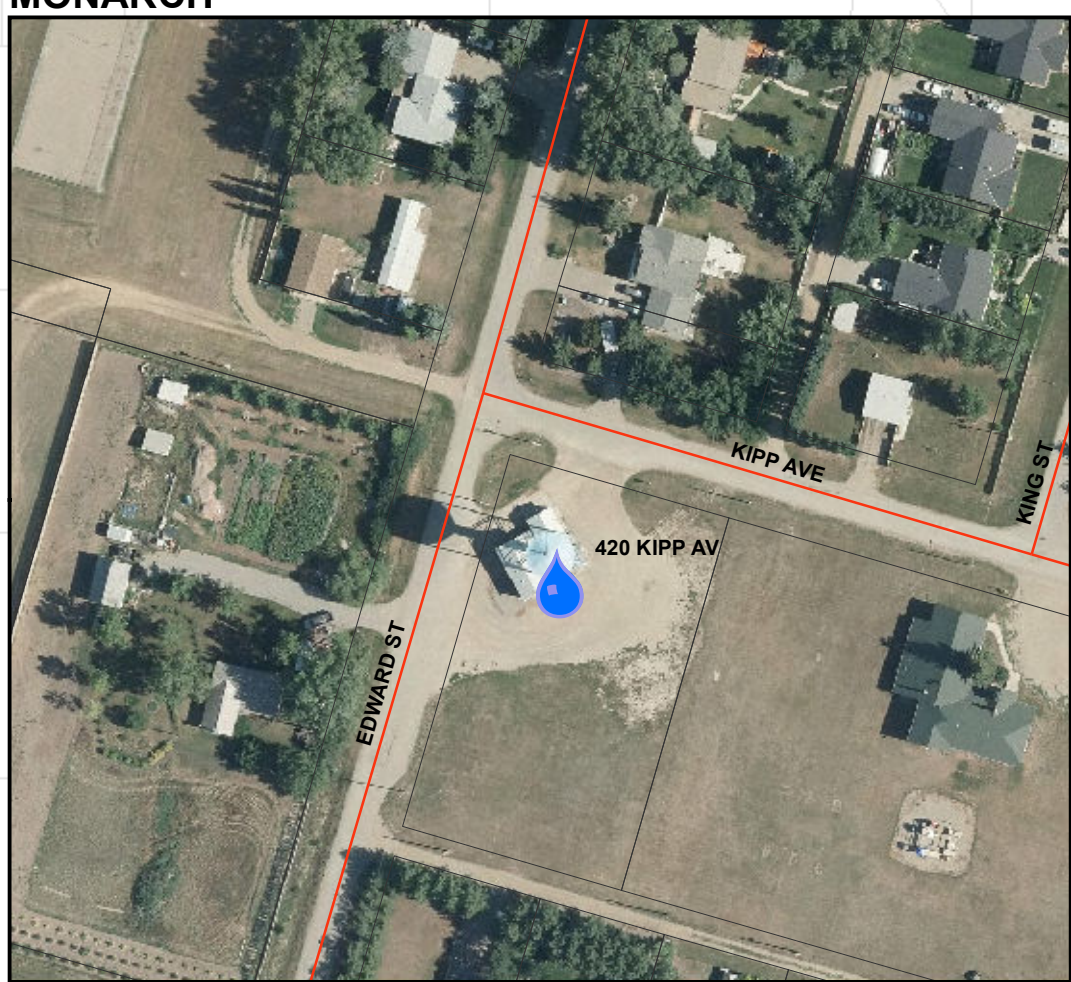
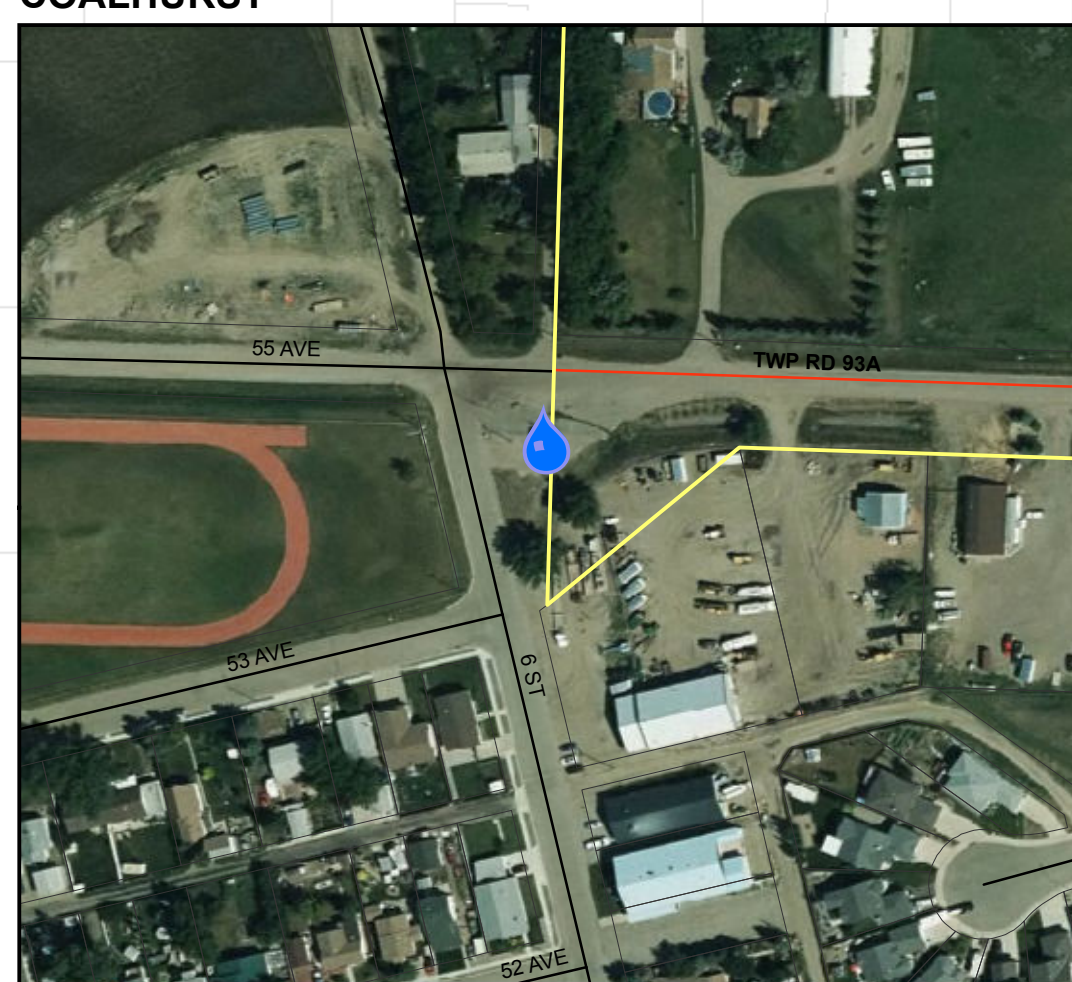


# Lethbridge County - Truck Fill Locations

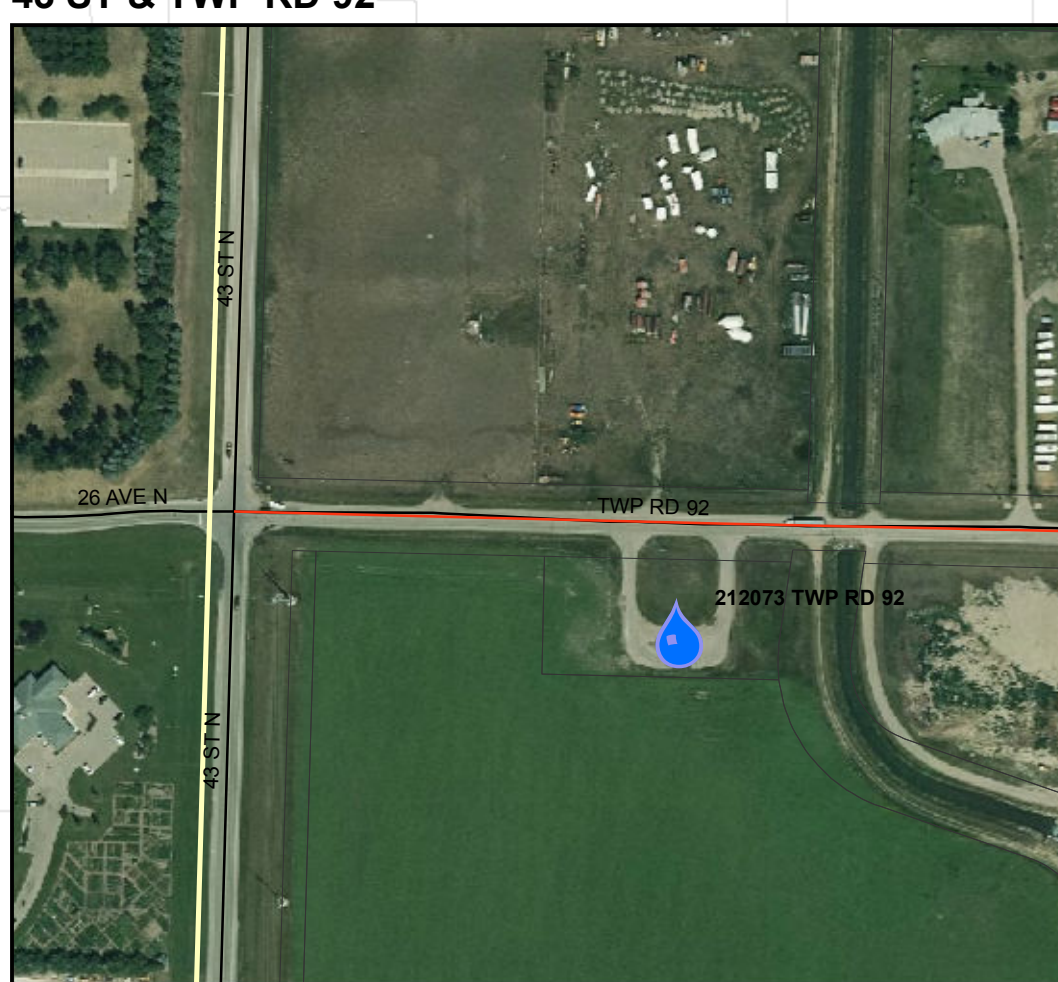
MONARCH



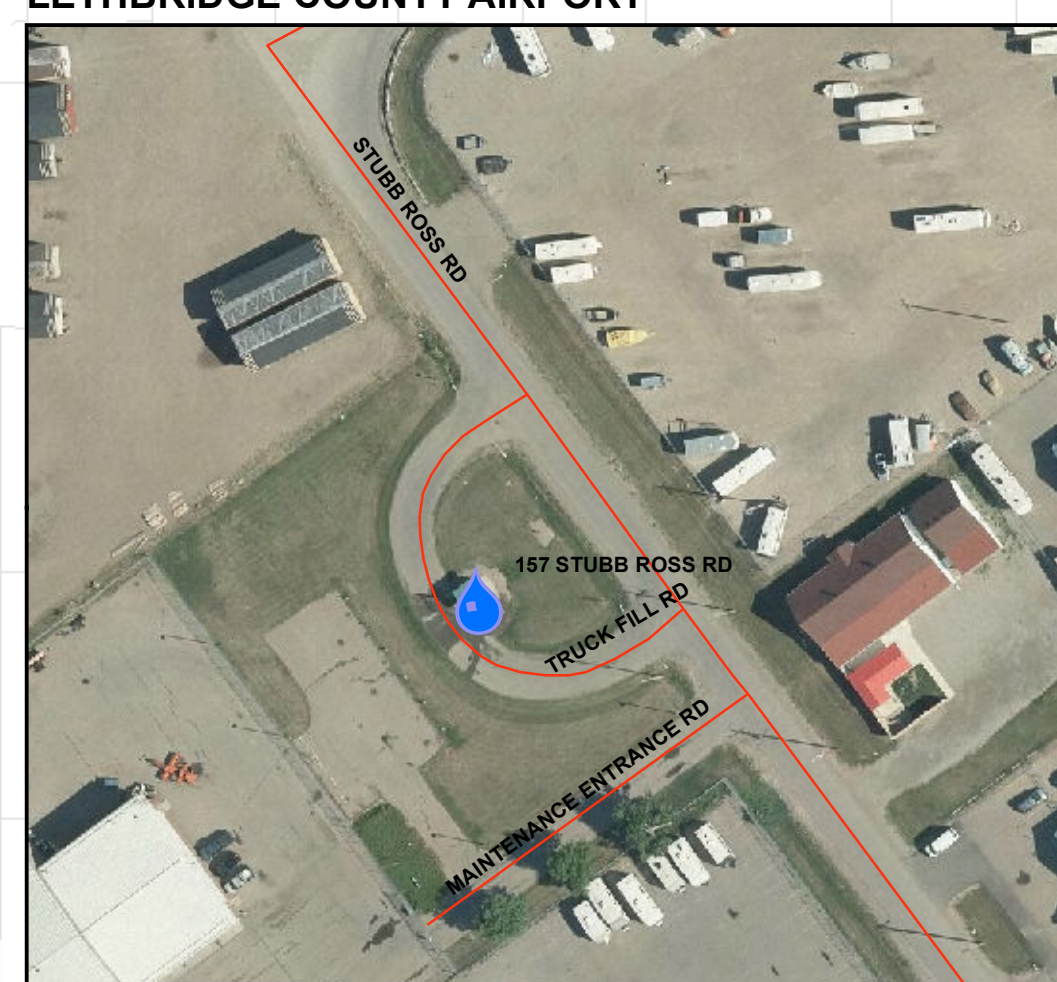
COALHURST



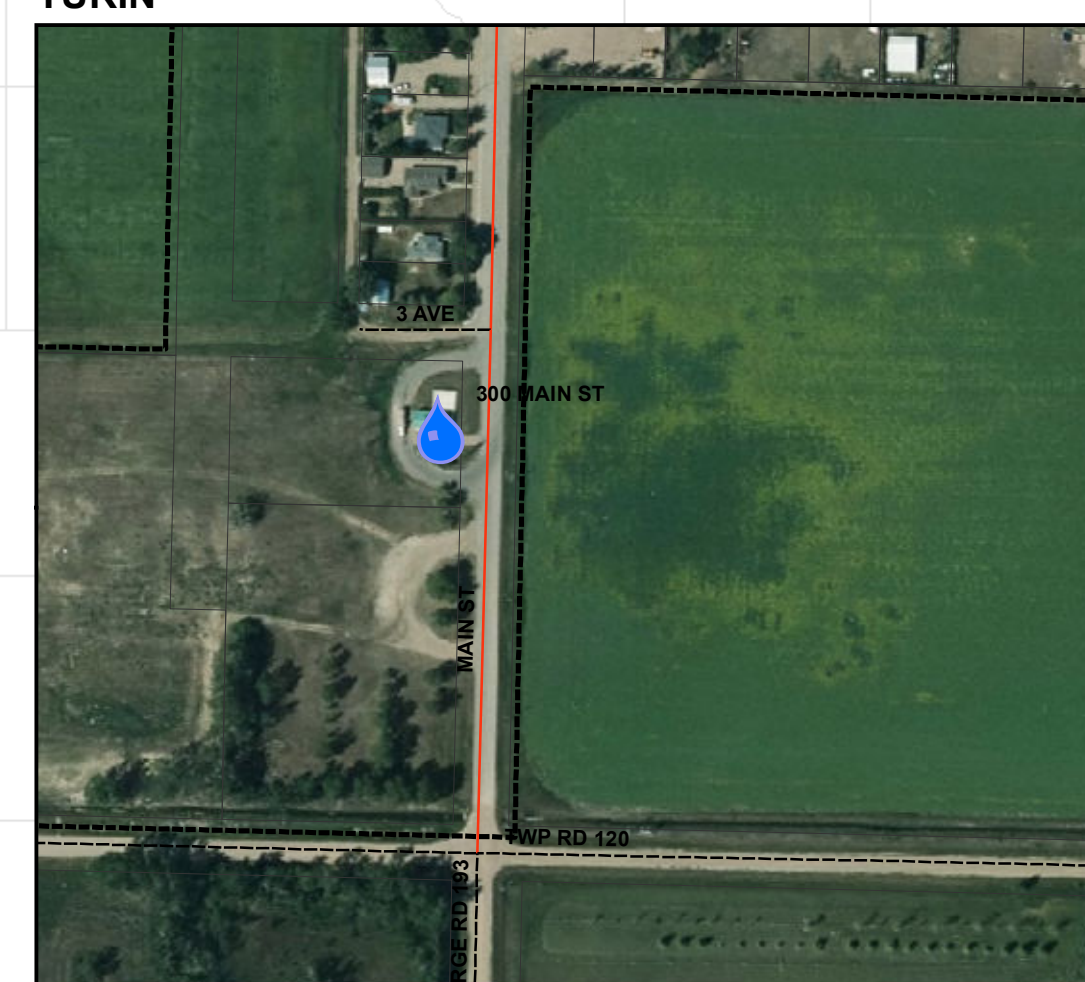
43 ST & TWP RD 92



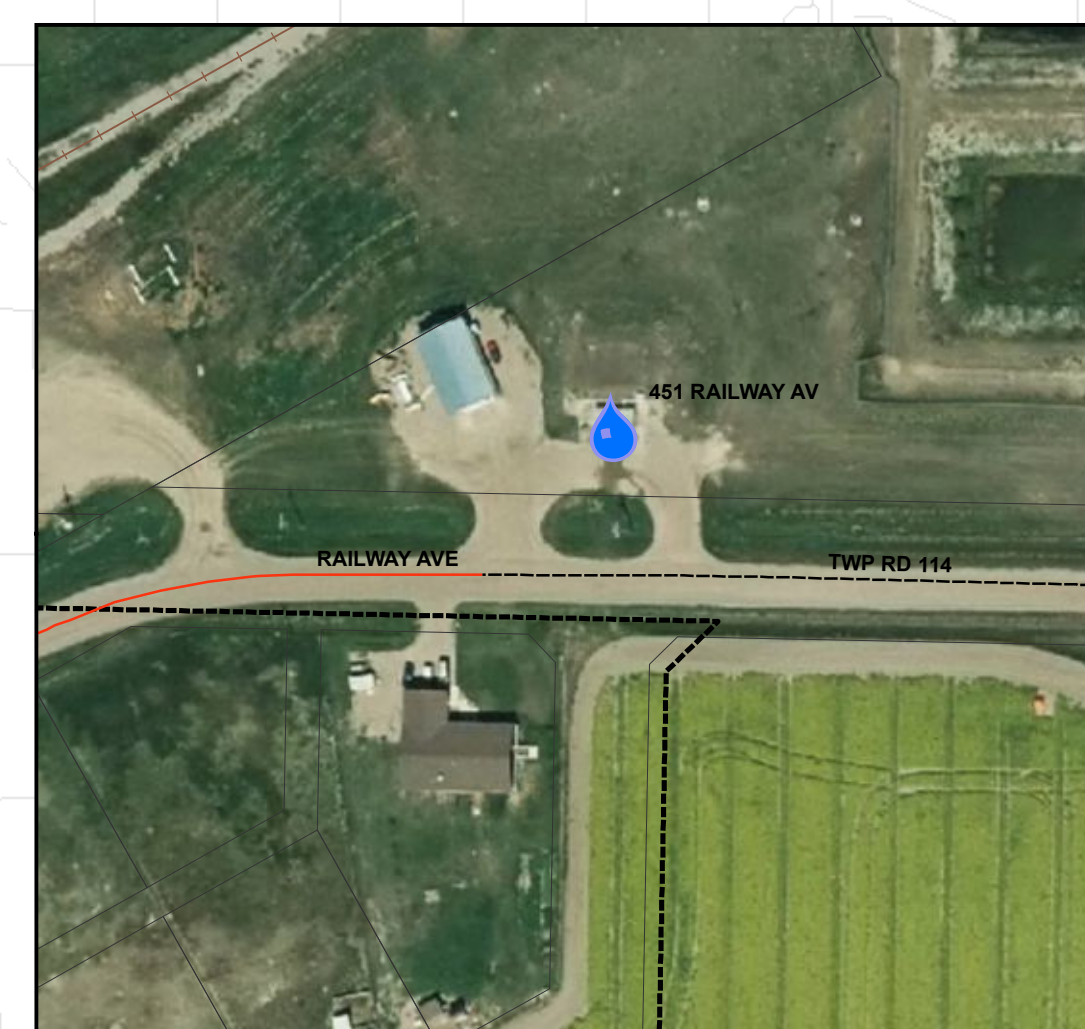
LETHBRIDGE COUNTY AIRPORT



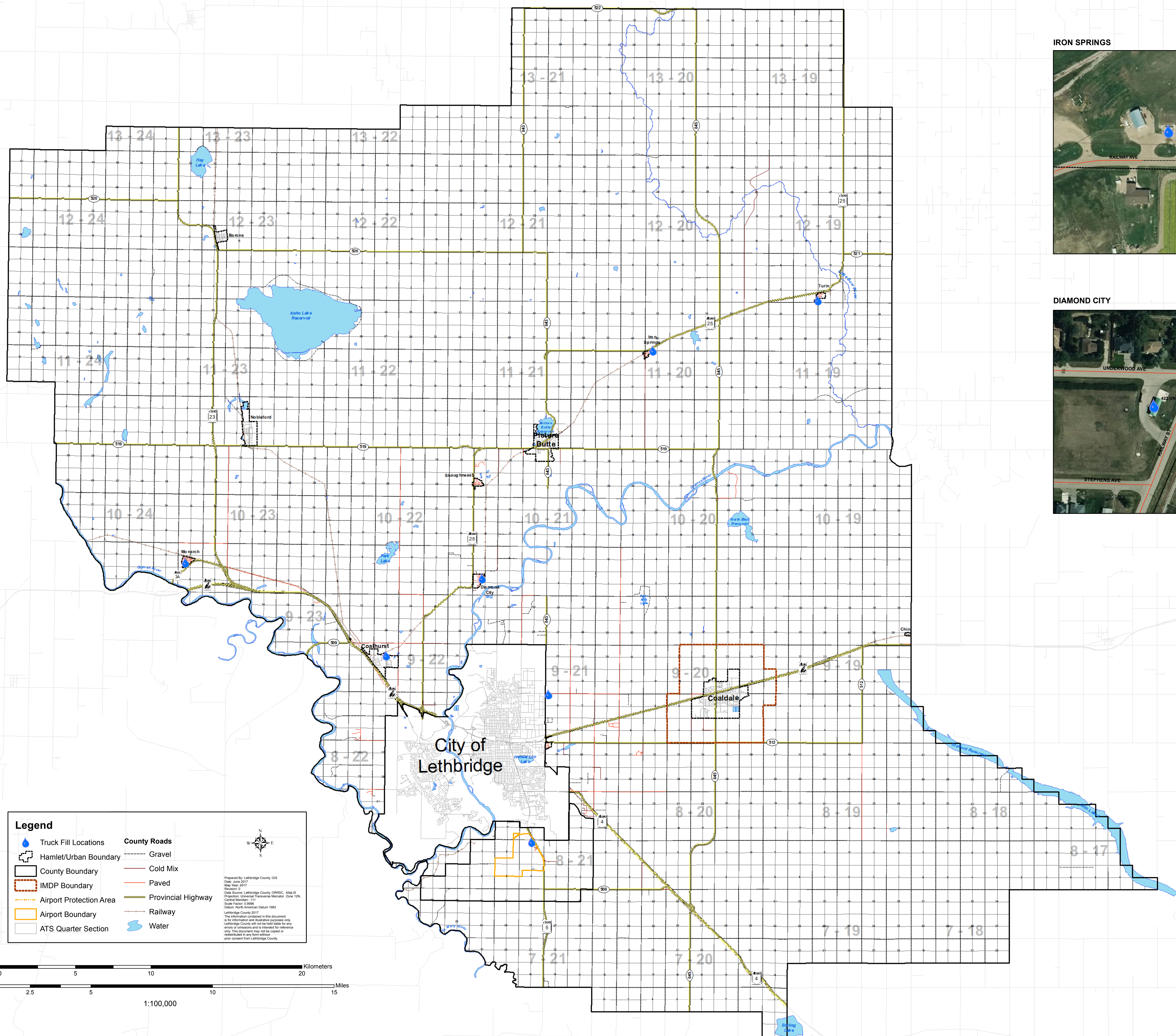
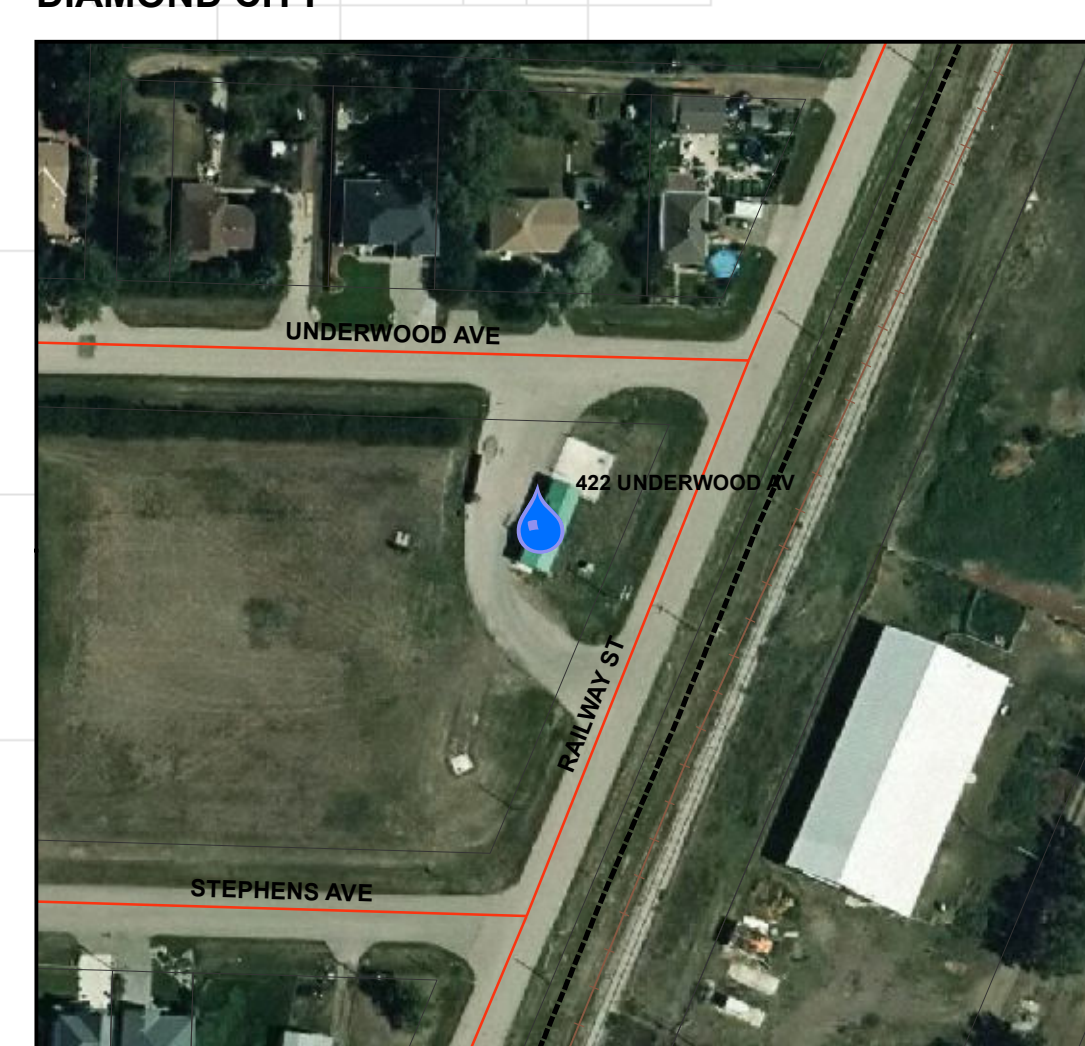
TURIN



IRON SPRINGS



DIAMOND CITY



**Legend**

- |                         |                    |
|-------------------------|--------------------|
| Truck Fill Locations    | County Roads       |
| Hamlet/Urban Boundary   | Gravel             |
| County Boundary         | Cold Mix           |
| IMDP Boundary           | Paved              |
| Airport Protection Area | Provincial Highway |
| Airport Boundary        | Railway            |
| ATQ Quarter Section     | Water              |



Prepared by Lethbridge County GIS  
 Date: June 2017  
 Map Year: 2017  
 Revision: 2  
 Data Source: Lethbridge County, CRSSC, AMLIS, ProQuest, Universal Transverse Mercator, Zone 12N, Central Meridian: 113, Scale Factor: 0.9996, Datum: North American Datum 1983  
 Lethbridge County 2017  
 The information contained in this document is for informational and illustrative purposes only. Lethbridge County will not be held liable for any errors or omissions and is intended for reference only. This document may not be copied or reproduced in any form without prior consent from Lethbridge County.

